

Criteria for Supported living

If you are interested in supported living contact your community key worker or social worker in hospital.

Supported living is an opportunity for you to live independently in the community with support.

Potential applicants must be 18 years or over, have the potential to live safely and in harmony in supported housing accommodation. Tenancy in Novara House is for a maximum of two years.

We are recovery driven. Staff will work with you in developing a care-plan which helps you towards your recovery.

Your recovery is personal, unique process and we will help you to meet the goals you have set yourself.



Tenant Views

“With the support of staff I have a fun week, I attend Mindwise, supported living was the next step for me after coming out of hospital. I feel less alone and more part of the community and able to manage my mental illness”

“Novara House has encouraged me to attend Action Mental Health whereby I had the opportunity of working in a local Primary School”

Staff Views

“Novara House offers excellent support for those with mental health problems to live independently and feel part of the community.”

“Supported living is a key component in making your recovery successful. Skilled staff on hand to support, offer advice.”

OUR MAIN BASE OF CONTACT

138 Thomas Street,
Portadown, BT62 3AN
Tel: 028 3833 1441

Personal and Public
Involvement (PPI)



Involving you,
improving care

www.thementalhealthforum.co.uk

SCAN THIS using the
QR reader
on a smart phone



Southern Health
and Social Care Trust

Quality Care - for you, with you

NOVARA SUPPORTED LIVING



INFORMATION LEAFLET

About Supported Living Services

Staff will listen to you and acknowledge what is important to you and will help you develop your personal skills.

You will be encouraged to involve yourself in the local community as well as be encouraged to take part in social activities and events of your choosing e.g. meals out, trips away, events that will help you manage feel part of the community and manage your mental health.

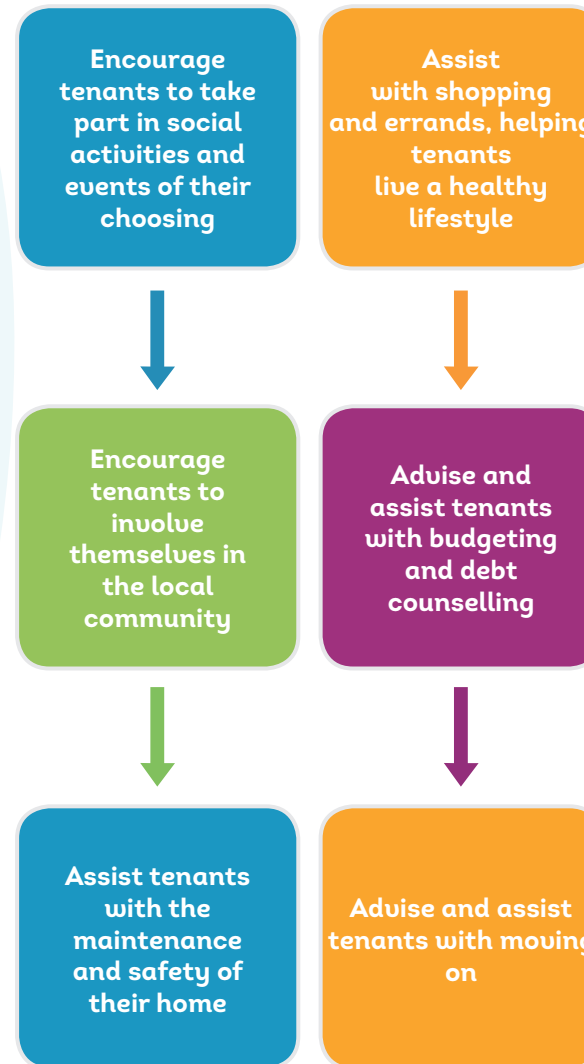
You will be required to participate in care and support plans

Our vision for Recovery

“Supported Housing is rehabilitative in nature, enabling people to be more independent, by maintaining existing skills and developing appropriate new skills.”



Range of support



Examples of Amenities in the Portadown and Craigavon area

- > Cinema
- > Shopping Mall
- > Local Grocery shops and supermarkets
- > Selection of restaurants and coffee shops
- > Various tourist attractions
- > Health Centre
- > Surgeries
- > Craigavon Area Hospital
- > Craigavon Lakes
- > Leisure centre